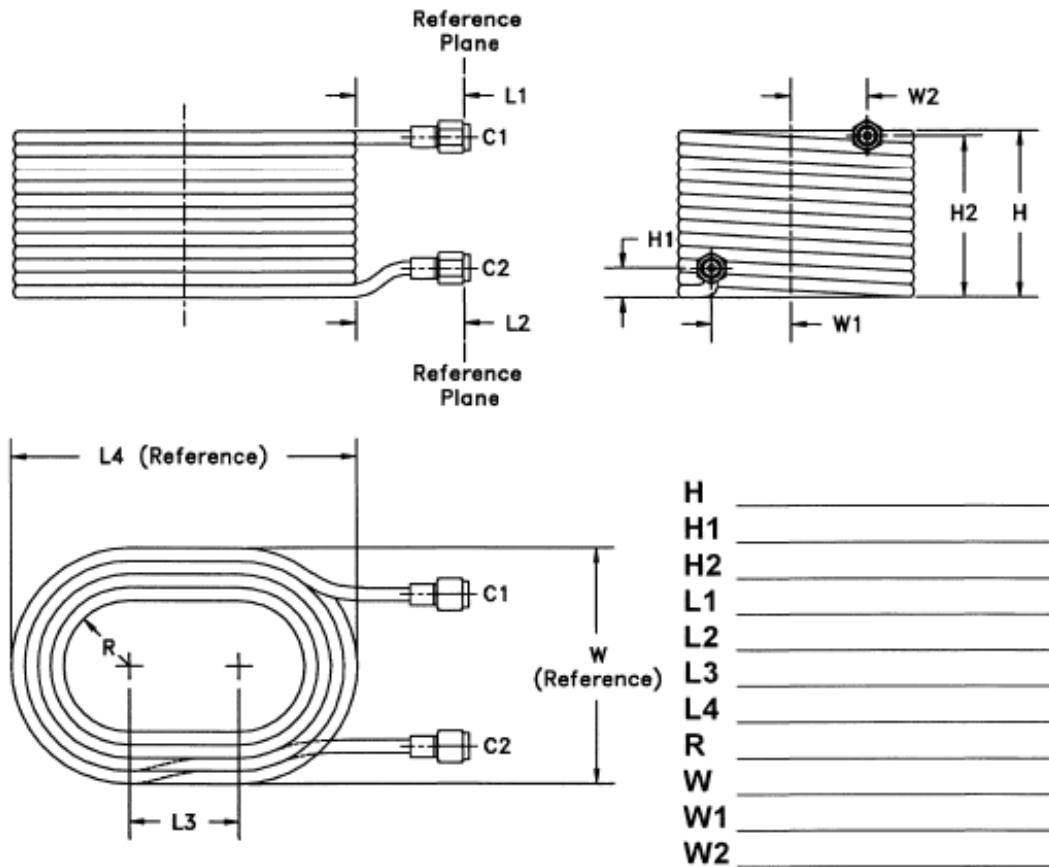


How to Specify Delay Line Assemblies

When specifying the mechanical requirements of a delay line assembly, the illustration below can be used as an example of the preferred method of defining dimensions. Unique dimensional shapes can also be accommodated to meet specific drawings. Complete electrical requirements should also be listed on the drawing to assure an accurate and timely response.



Connector Type (C1) _____
 Connector Type (C2) _____
 Cable Type _____
 Cable Marker _____
 Delay Required _____
 Tolerance of Delay _____

VSWR _____
 Frequency Range _____
 Return Loss _____
 Insertion Loss _____
 Other _____

In the absence of a specification, engineering staff assistance in the electrical and mechanical design of delay lines is available.